



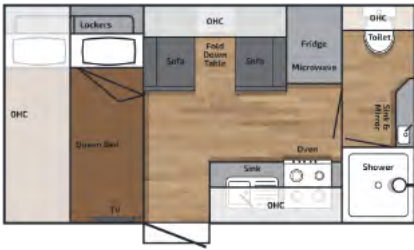
Your ticket to *freedom* since 1947

The Trusted name
for 78 years

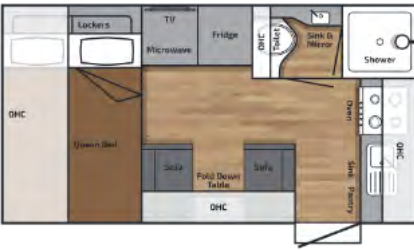


TOURA-X

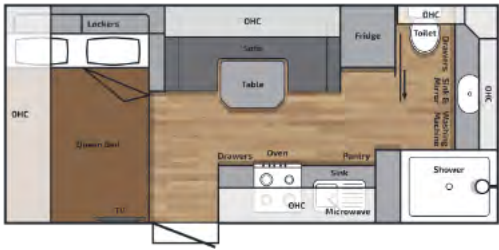
Couples Van Layouts



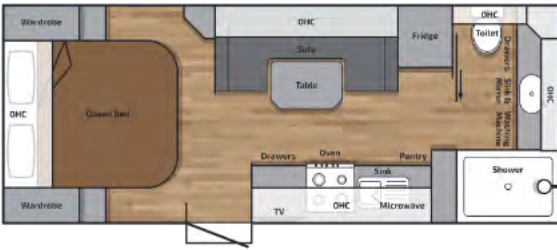
TX147CDQBEWDS
External Body Length: 4480mm Overall Height: 3200mm
Overall External Length: 7380mm Overall Width: 2500mm
End Coupling to Outer Spare Tyre



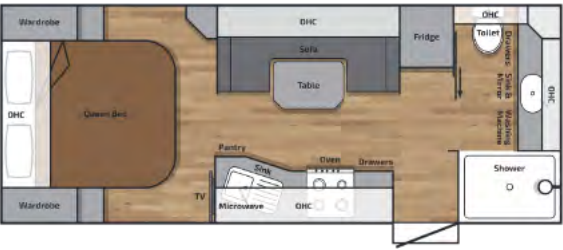
TX149RDQBEWDS
External Body Length: 4530mm Overall Height: 3200mm
Overall External Length: 7430mm Overall Width: 2500mm
End Coupling to Outer Spare Tyre



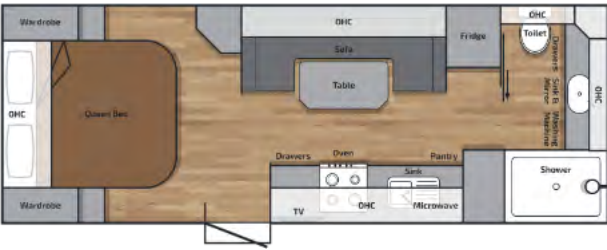
TX176CDQBEWSC
External Body Length: 5365mm Overall Height: 3200mm
Overall External Length: 8265mm Overall Width: 2500mm
End Coupling to Outer Spare Tyre



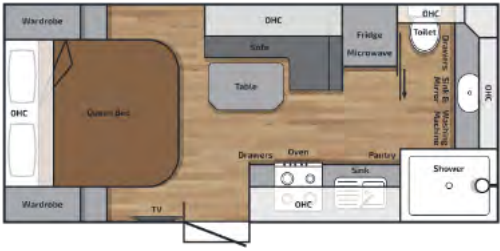
TX199CDQBSC
External Body Length: 6055mm Overall Height: 3200mm
Overall External Length: 8955mm Overall Width: 2500mm
End Coupling to Outer Spare Tyre



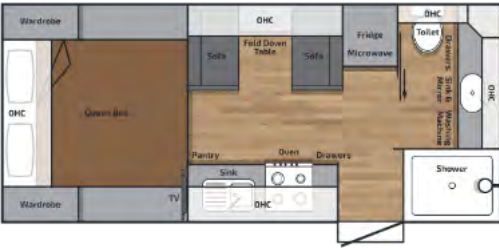
TX1911RDQBSC
External Body Length: 6105mm Overall Height: 3200mm
Overall External Length: 9005mm Overall Width: 2500mm
End Coupling to Outer Spare Tyre



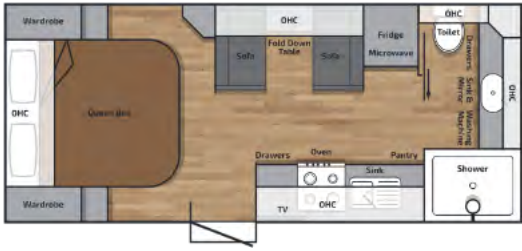
TX216CDQBSC
External Body Length: 6590mm Overall Height: 3200mm
Overall External Length: 9490mm Overall Width: 2500mm
End Coupling to Outer Spare Tyre



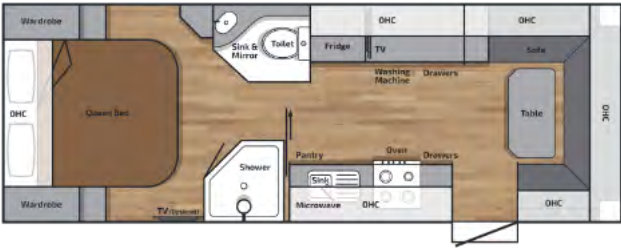
TX176CDQBLL
External Body Length: 5365mm Overall Height: 3200mm
Overall External Length: 8265mm Overall Width: 2500mm
End Coupling to Outer Spare Tyre



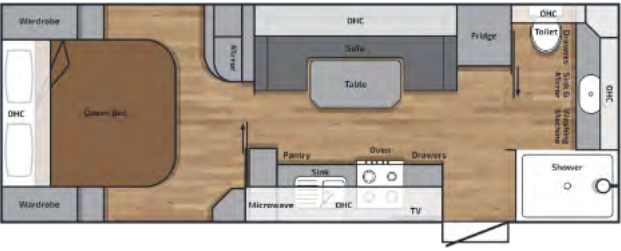
TX178RDQBDS
External Body Length: 5420mm Overall Height: 3200mm
Overall External Length: 8320mm Overall Width: 2500mm
End Coupling to Outer Spare Tyre



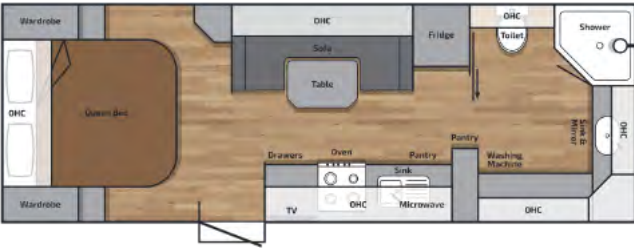
TX183CDQBDS
External Body Length: 5595mm Overall Height: 3200mm
Overall External Length: 8495mm Overall Width: 2500mm
End Coupling to Outer Spare Tyre



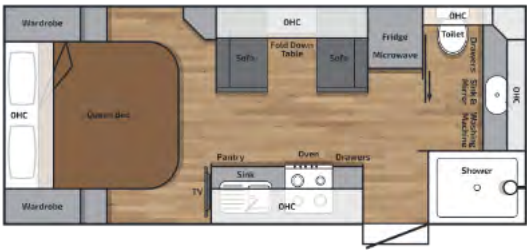
TX2111RDQBRC
External Body Length: 6715mm Overall Height: 3200mm
Overall External Length: 9625mm Overall Width: 2500mm
End Coupling to Outer Spare Tyre



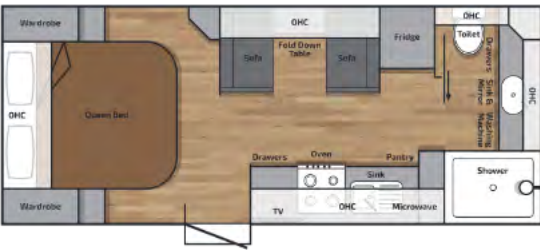
TX2111RDQBSC
External Body Length: 6715mm Overall Height: 3200mm
Overall External Length: 9625mm Overall Width: 2500mm
End Coupling to Outer Spare Tyre



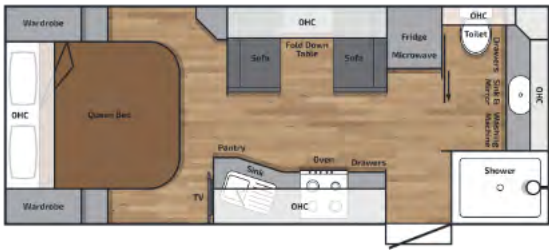
TX226CDQBSC
External Body Length: 6895mm Overall Height: 3200mm
Overall External Length: 9805mm Overall Width: 2500mm
End Coupling to Outer Spare Tyre



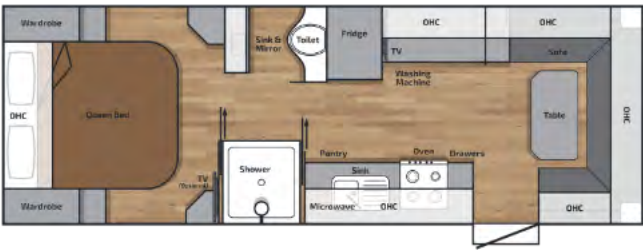
TX185RDQBDS
External Body Length: 5645mm Overall Height: 3200mm
Overall External Length: 8545mm Overall Width: 2500mm
End Coupling to Outer Spare Tyre



TX192CDQBDS
External Body Length: 5875mm Overall Height: 3200mm
Overall External Length: 8775mm Overall Width: 2500mm
End Coupling to Outer Spare Tyre



TX194RDQBDS
External Body Length: 5925mm Overall Height: 3200mm
Overall External Length: 8825mm Overall Width: 2500mm
End Coupling to Outer Spare Tyre



TX228RDQBRC
External Body Length: 6945mm Overall Height: 3200mm
Overall External Length: 9845mm Overall Width: 2500mm
End Coupling to Outer Spare Tyre

Specifications

Model	14ft7 (CD) / 14ft9 (RD)	17ft6EW (CD) / 17ft6 (CD) / 17ft8 (RD)	18ft3 (CD) / 18ft5 (RD)	19ft2 (CD) / 19ft4 (RD)	19ft9 (CD) / 19ft11 (RD)	21ft6 (CD)	21ft11 (RD)	21ft11 (RD)	22ft6 (CD)	22ft8 (RD)
Door Position Reference	CD/ RD	CD / RD	CD / RD	CD / RD	CD / RD	CD	RD	RD	CD	RD
Seating Arrangement - Centre Door	Dinette	Side Club EW /L- Lounge	Dinette	Dinette	Side Club	Side Club			Side Club	NA
Seating Arrangement - Rear Door	Dinette	Dinette	Dinette	Dinette	side Club	NA	Rear Club	Side Club	NA	Rear Club
Other Seating Options	L-Lounge	L-Lounge RD Only	L-Lounge	L-Lounge	Dinette or L- Lounge	Dinette	Side Club + Dinette	Dinetter	Dinette	NA
Caption Chairs		17ft6 EW CD	Optional CD&RD	Optional CD&RD			Optional in Rear Club	NA		Optional in Rear Club
Single Beds (seating change to Side Club)			Optional	Optional	Optional RD Only		Optional in Rear Club	NA		Optional in Rear Club

Dimensions										
External Body Length	4480mm (CD) / 4530mm (RD)	5365mm (CD) / 5420mm (RD)	5595mm (CD) / 5645mm (RD)	5875mm (CD) / 5925mm (RD)	6055mm (CD) / 6105mm (RD)	6590mm (CD)	6715mm (RD)	6715mm (RD)	6895mm (CD)	6945mm (RD)
External Length (End Coupling to Outer Spare Tyre)	7380mm (CD) / 7430mm (RD)	8265mm (CD) / 8320mm (RD)	8495mm (CD) / 8545mm (RD)	8775mm (CD) / 8825mm (RD)	8955mm (CD) / 9005mm (RD)	9490mm (CD)	9625mm (RD)	9625mm (RD)	9805mm (CD)	9845mm (RD)
External Height (Ground to Top of AC Unit)	3200mm	3200mm	3200mm	3200mm	3200mm	3200mm	3200mm	3200mm	3200mm	3200mm
External Width includes all protruding fixtures	2500mm	2500mm	2500mm	2500mm	2500mm	2500mm	2500mm	2500mm	2500mm	2500mm
Internal Length	4335mm (CD) / 4385mm (RD)	5225mm(CD) / 5275mm (RD)	5475mm(CD) / 5525mm (RD)		5900mm (CD) / 5950mm (RD)	6425mm (CD)	6550mm (RD)	6550mm (RD)	6725mm (CD)	6825mm (RD)
Internal Height	2010mm	2010mm	2010mm	2010mm	2010mm	2010mm	2010mm	2010mm	2010mm	2010mm
Internal Width	2285mm	2285mm	2285mm	2285mm	2285mm	2285mm	2285mm	2285mm	2285mm	2285mm

Note : Indicative lengths are standard configuration, any additional options or variations could change these figures

Construction										
Alko Engineered Wheel Arch Designed Infill Truss Chassis - Galvanized	•	•	•	•	•	•	•		•	•
Options : SuperGal Painted Charcoal or Enduro Paint	o	o	o	o	o	o	o	o	o	o
Alko Chassis Construction:										
Extended Aframe (length 2000mm , steel 6" x 2") C450	•	•	•	•	•	•	•	•	•	•
Truss Main Bearers Top: 75x50 Grade C350	•	•	•	•	•	•	•	•	•	•
Truss Main Bearers Bottom: 50x50x3mm Grade C350	•	•	•	•	•	•	•	•	•	•

Model	14ft7 (CD) / 14ft9 (RD)	17ft6EW (CD) / 17ft6 (CD) / 17ft8 (RD)	18ft3 (CD) / 18ft5 (RD)	19ft2 (CD) / 19ft4 (RD)	19ft9 (CD) / 19ft11 (RD)	21ft6 (CD)	21ft11 (RD)	21ft11 (RD)	22ft6 (CD)	22ft8 (RD)
Construction										
Aluminium Wall Frame	•	•	•	•	•	•	•	•	•	•
Full Piece Composite Roof : 5 Colour Options	•	•	•	•	•	•	•	•	•	•
22mm XPS Mositure Resistant Insulation between Aluminium Wall Frames	•	•	•	•	•	•	•	•	•	•
PolyHoney Comb Heavy Duty Flooring	•	•	•	•	•	•	•	•	•	•
30mm One Piece XPS Insulated CNC Pre-Fabricated Roof	•	•	•	•	•	•	•	•	•	•
Aluminium Composite Panel : 5 Colour Options	•	•	•	•	•	•	•	•	•	•
Cruisemaster Single ATX 3.0T ATM Coil Suspension with 12" Elctric Brakes	•	•	•	NA	NA	NA	NA	NA	NA	NA
Cruisemaster Tandem XT 3.7T ATM Coil Suspension with 12" Elctric Brakes	NA	NA	NA	•	•	•	•	•	•	•
DO35 / DO45 V2 HitchMaster Coupling (Subject to Weights)	•	•	•	•	•	•	•	•	•	•
Exterior										
265/75 R17 All Terrain Tyres on Silver/Black Rims Includes One Spare Wheel	•	•	•	•	•	•	•	•	•	•
Black Checker Plate approx 750mm on sides	•	•	•	•	•	•	•	•	•	•
Printed Decals Choice of 5 colours	•	•	•	•	•	•	•	•	•	•
Picnic Table	•	•	•	•	•	•	•	•	•	•
External TV Box	NA	•	•	•	•	•	•	•	•	•
External Awning with Mid roller support	NA	•	•	•	•	•	•	•	•	•
Electric Awning	•	o	o	o	o	o	o	o	o	o
Double Manual Entry Step	•	•	•	•	•	•	•	•	•	•
Entry Door Grab Handle with Light	•	•	•	•	•	•	•	•	•	•
Galvanized Bumper Bar 3 ARM 45 DEG 46" STD	•	•	•	•	•	•	•	•	•	•
Alko 8" Jockey Wheel	•	•	•	•	•	•	•	•	•	•
Full Width Tunnel Boot	•	•	•	•	•	•	•	•	•	•
Checker Plate Toolbox with Double Sliders and Opening Top Lid	•	•	•	•	•	•	•	•	•	•

Specifications

Model	14ft7 (CD) / 14ft9 (RD)	17ft6EW (CD) / 17ft6 (CD) / 17ft8 (RD)	18ft3 (CD) / 18ft5 (RD)	19ft2 (CD) / 19ft4 (RD)	19ft9 (CD) / 19ft11 (RD)	21ft6 (CD)	21ft11 (RD)	21ft11 (RD)	22ft6 (CD)	22ft8 (RD)
Exterior										
Milenco Dust Reduction Antenna	•	•	•	•	•	•	•	•	•	•
Jerry Cans x 2	•	•	•	•	•	•	•	•	•	•
Fusion Panel Speaker Outdoor plus Mounting Bracket, with SRX400 Marine Stereo	•	•	•	•	•	•	•		•	•
Safety Dave RVDash Kit (6" Dash + Mini Square Camera 92 Degree AHD Black)	NA	•	•	•	•	•	•		•	•
Wireless Reversing Camera	•	o	o	o	o	o	o	o	o	
Electrical										
Projecta / Intelli Grid - Compact 100 Consisting of:	•	•	•	•	•	•	•		•	•
3000W / 180 Amp Inverter/AC Charger	•	•	•	•	•	•	•		•	•
40Amp DC_DC Charger	•	•	•	•	•	•	•		•	•
40Amp Solar Charger x 2	•	•	•	•	•	•	•		•	•
7 Inch Colour Scream	•	•	•	•	•	•	•		•	•
3 Water Tank Monitoring Sensors	•	•	•	•	•	•	•		•	•
400AH Projecta HD Lithium Battery Internal 500A Shunt (installed internally)	•	•	•	•	•	•	•	•	•	•
Three Solar Panels - Four Solar Panels (200watts each/ model dependant)	X2 Only	•	•	•	•	•	•	•	•	•
Anderson Plug - DCtoDC Battery Charging	•	•	•	•	•	•	•	•	•	•
Additional Anderson Plug - Portable Solar Panel	•	•	•	•	•	•	•	•	•	•
Dexter Anti Sway System (DSC)	•	•	•	•	•	•	•	•	•	•
Milenco Dust Reduction Antenna	•	•	•	•	•	•	•	•	•	•
Starlink Ready: 12V Starlink Cosmo (for Starlink Gen 3)	•	•	•	•	•	•	•	•	•	•
Fusion Radio Apollo 770 Stereo System Plus Fusion Corner Speakers (2 Bedroom and 2 Seating Area)	•	•	•	•	•	•	•	•	•	•
Dimmerable Downlights with soft LED strip light in Ensuite.	•	•	•	•	•	•	•	•	•	•
Soft LED strip Lights at : Main Bed Side Tables, Under the Kitchen OHC and Ensuite Cabinetry	•	•	•	•	•	•	•	•	•	•

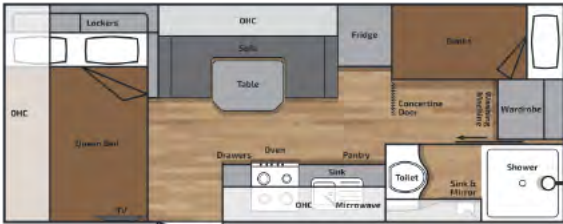
Model	14ft7 (CD) / 14ft9 (RD)	17ft6EW (CD) / 17ft6 (CD) / 17ft8 (RD)	18ft3 (CD) / 18ft5 (RD)	19ft2 (CD) / 19ft4 (RD)	19ft9 (CD) / 19ft11 (RD)	21ft6 (CD)	21ft11 (RD)	21ft11 (RD)	22ft6 (CD)	22ft8 (RD)
Electrical										
Multi Colour Annex Light - Door Side	x2	x2	x2	x3	x3	x3	x3	x3	x3	x3
Multi Colour Annex Light - Driver Side	x1	x1	x1	x1	x1	x1	x1	x1	x1	x1
External Power Point at Picnic Table	•	•	•	•	•	•	•	•	•	•
Reversing Camera	NA	•	•	•	•	•	•	•	•	•
Wireles Reversing Camera	•	o	o	o	o	o	o	o	o	o
24" Smart TV (van size : 14ft7-18ft5)	•	•	•	NA	NA	NA	NA	NA	NA	NA
27" Smart TV (Van size > 19ft2)	NA	NA	NA	•	•	•	•	•	•	•
Tunnel Boot lighting at lockable doors , both sides	•	•	•	•	•	•	•	•	•	•
240V Single Power point,12V Socket,USB port in Bedside Nook	•	•	•	•	•	•	•	•	•	•
Double Power Points : Living Seating Plus USB, Kitchen and Ensuite	•	•	•	•	•	•	•	•	•	•
Reading Lights : Bedroom x2 , Living x 2	•	•	•	•	•	•	•	•	•	•
External TV Box : 240V Single Power Point, CIG 12V / Antenna Point Plus Fusion SRX400 Stero and External Panel Speaker	NA	•	•	•	•	•	•	•	•	•
Built in Phone Chargers	•	•	•	•	•	•	•	•	•	•
Plumbing										
Multi Lockable Water Filler Box with Fresh Water Tank Change Over Valve	•	•	•	•	•	•	•	•	•	•
Three Water Tank Sensors	•	•	•	•	•	•	•	•	•	•
External Mounted SailingFlo Pump Under chassis	•	•	•	•	•	•	•	•	•	•
Fresh Water Tanks : 2 x95 Litres	•	•	•	•	•	•	•	•	•	•
Grey Water Tank : 1 x 110 Litres	•	•	•	•	•	•	•	•	•	•
External Shower	•	•	•	•	•	•	•	•	•	•
Mains Tap to A Frame & Mains Pressure	•	•	•	•	•	•	•	•	•	•
Two 9kg Gas Bottles Stored Internally within the Toolbox	•	•	•	•	•	•	•	•	•	•
External Gas Bayonet Fitting	•	•	•	•	•	•	•	•	•	•
Gas and Electric Hot Water System	•	•	•	•	•	•	•	•	•	•
Global Eberspacher Diesel Heater (2.2KW)	•	•	•	•	•	•	•	•	•	•

Specifications

Model	14ft7 (CD) / 14ft9 (RD)	17ft6EW (CD) / 17ft6 (CD) / 17ft8 (RD)	18ft3 (CD) / 18ft5 (RD)	19ft2 (CD) / 19ft4 (RD)	19ft9 (CD) / 19ft11 (RD)	21ft6 (CD)	21ft11 (RD)	21ft11 (RD)	22ft6 (CD)	22ft8 (RD)
Plumbing										
Non Return Valve on the Shower, Vanity Bowl and Kitchen Sink	•	•	•	•	•	•	•	•	•	•
Protection over PVC Drainage Piped	•	•	•	•	•	•	•	•	•	•
Thetford C263CS Ceramic Toilet	14ft7 (CD)	•	•	•	•	•	NA	•	•	NA
Thetford C402-C Left / Right Hand Toilet	14ft9 (RD)	NA	NA	NA	NA	NA	•	NA	NA	•
Ensuite / Bathroom										
Separate Shower & Toilet	•	•	•	•	•	•	•	•	•	•
Fully Moulded One Piece Large Shower Cubicle	•	•	•	•	•	•	•	•	•	•
Sliding or Hinged Door at Ensuite Entrance (Model Dependent)	•	•	•	•	•	•	•	•	•	•
Caramic Swivel Toilet (Model dependent)	•	•	•	•	•	•	•	•	•	•
Mixer Taps Basin , Shower	•	•	•	•	•	•	•	•	•	•
Single Internal Towel Rail	•	•	•	•	•	•	•	•	•	•
Exhaust Fan Hatch in Shower	•	•	•	•	•	•	•	•	•	•
Bathroom Window Above Toilet	•	•	•	•	•	•	•	•	•	•
Qflow Exclusive 2.5kg Front Loader Washing Machine	NA	•	•	•	•	•	•	•	•	•
Exclusive Vanity Mirror with builtin LED Lighting	NA	•	•	•	•	•	NA	NA	•	NA
Wrapped Around OHC over Vanity and Toilet	NA	•	•	•	•	•	NA	NA	•	NA
Kitchen										
Recessed Thetford K1520 Combination Cooker -Dual Fuel W/Fan Forced Oven	•	•	•	•	•	•	•	•	•	•
White Aluminium Kitchen Splashback	•	•	•	•	•	•	•	•	•	•
Three way Filter Tap	•	•	•	•	•	•	•	•	•	•
Qflow 23Litre Microwave Oven	•	•	•	•	•	•	•	•	•	•
Dometic 180 Litre RUC Compressor Fridge 6408 X (Van Size 14ft7-19ft4)	•	•	•	•	NA	NA	NA	NA	NA	NA
Dometic 216 Litre RUC Compressor 8408 X (van > 19ft9)	NA	NA	NA	NA	•	•	•	•	•	•
Slimline RangeHood	•	•	•	•	•	•	•	•	•	•
My Coolman 3.2KW Reverse Cycle Air Conditioner	•	•	•	•	•	•	•	•	•	•

Model	14ft7 (CD) / 14ft9 (RD)	17ft6EW (CD) / 17ft6 (CD) / 17ft8 (RD)	18ft3 (CD) / 18ft5 (RD)	19ft2 (CD) / 19ft4 (RD)	19ft9 (CD) / 19ft11 (RD)	21ft6 (CD)	21ft11 (RD)	21ft11 (RD)	22ft6 (CD)	22ft8 (RD)
Living Seating Area										
Padding Over Entry Door and Roof Mounted LED	•	•	•	•	•	•	•	•	•	•
Exclusive Designed Seating with side Leg Support	•	•	•	•	•	•	•	•	•	•
Heavy Duty Vinyl Flooring available in 4 colours	•	•	•	•	•	•	•	•	•	•
Exclusive designed Map/ Magazine and Key holder	•	•	•	•	•	•	•	•	•	•
Tic Cushion supplied with Telescopic table base	NA	• 17ft6 CD	NA	NA	• 19ft11	•	•	•	•	•
Bedroom										
Exclusive Designed Full Size Bedhead	•	•	•	•	•	•	•	•	•	•
Pillow Top Spring Mattress on Slatted Bed Base	•	•	•	•	•	•	•	•	•	•
Roof Hatch with Lights	•	•	•	•	•	•	•	•	•	•
Wardrobe with Bedside Nook and Bottom Drawers	•	•	•	•	•	•	•	•	•	•
Side Tables with Soft LED lighting	•	•	•	•	•	•	•	•	•	•
Built In Phone Charger	•	•	•	•	•	•	•	•	•	•
Cabinetry										
CNC Cabintery through out the Entire Van	•	•	•	•	•	•	•	•	•	•
Modern Slimline Benchtop (Kitchen and Ensuite)	•	•	•	•	•	•	•	•	•	•
White Aluminium Kitchen Splashback	•	•	•	•	•	•	•	•	•	•
Gas Door Struts on Overhead Cupdoors	•	•	•	•	•	•	•	•	•	•
Cultrey Drawer Insert	•	•	•	•	•	•	•	•	•	•
Safety										
Breakaway Safety System	•	•	•	•	•	•	•	•	•	•
Fire Extinguisher	•	•	•	•	•	•	•	•	•	•
Smoke Alarm	•	•	•	•	•	•	•	•	•	•
Gas Detector										
Door - External 4 Pin lock with Security Screen	•	•	•	•	•	•	•	•	•	•
Dexter Anti Sway Control System (DSC)	•	•	•	•	•	•	•	•	•	•

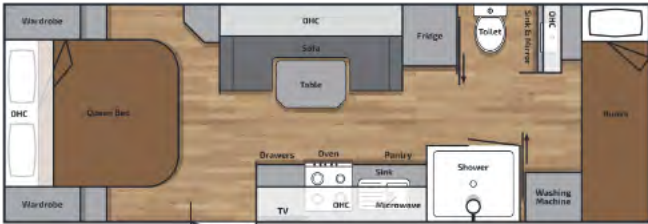
Family Van Layouts



TX1911CDQBEWSCSB

External Body Length: 6105mm
Overall External Length: 9050mm
End Coupling to Outer Spare Tyre

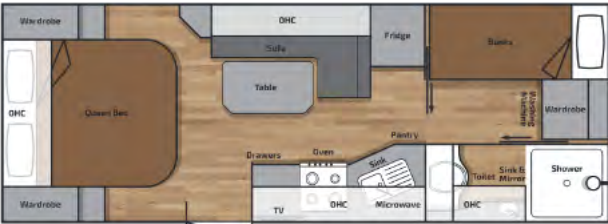
Overall Height: 3200mm
Overall Width: 2500mm



TX2210CDQBSCRB

External Body Length: 6995mm
Overall External Length: 9945mm
End Coupling to Outer Spare Tyre

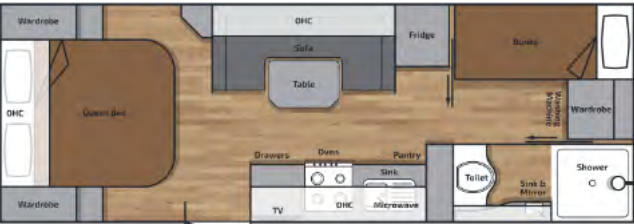
Overall Height: 3200mm
Overall Width: 2500mm



TX216CDQBLLSB

External Body Length: 6590mm
Overall External Length: 9540mm
End Coupling to Outer Spare Tyre

Overall Height: 3200mm
Overall Width: 2500mm



TX226CDQBSCSB

External Body Length: 6895mm
Overall External Length: 9855mm
End Coupling to Outer Spare Tyre

Overall Height: 3200mm
Overall Width: 2500mm

Specifications

Model	19ft11 EW (CD)	21ft6 (CD)	22ft6 (CD)	22ft10 (CD)
Door Position Reference	CD	CD	CD	CD
Standard Seating Arrangement - Centre Door	Side Club	L-Lounge	Side Club	Side Club
Other Seating Options	Dinette or L-Lounge	NA	Dinette or L-Lounge	Dinette or L-Lounge

Dimensions				
External Body Length	6105mm (CD)	6590mm (CD)	6895mm (CD)	6995mm (CD)
External Length (End Coupling to Outer Spare Tyre)	9050mm (CD)	9540mm (CD)	9855mm (CD)	9945mm (CD)
External Height (Ground to Top AC Unit)	3200mm	3200mm	3200mm	3200mm
External Width includes all protruding fixtures	2500mm	2500mm	2500mm	2500mm
Internal Length	5950mm (CD)	6425mm (CD)	6725mm (CD)	6825mm (CD)
Internal Height	2010mm	2010mm	2010mm	2010mm
Internal Width	2285mm	2285mm	2285mm	2285mm

Note : Indicative lengths are standard configuration, any additional options or variations could change these figures

Construction				
Alko Engineered Truss - Wheel Arch Chassis - Galvanized	•	•	•	•
Options : SuperGal Painted Charcoa or Enduro Paint	o	o	o	o
Alko Chassis Construction:				
Extended Aframe (length 2000mm , steel 6" x 2") C450	•	•	•	•
Truss Main Bearers Top: 75x50 Grade C350	•	•	•	•
Truss Main Bearers Bottom: 50x50x3mm Grade C350	•	•	•	•
Aluminium Wall Frame	•	•	•	•
Full Piece Composite Roof : 5 Colour Options	•	•	•	•
22mm XPS Mositure Resistant Insulation between Aluminim Wall Frames	•	•	•	•
PolyHoney Comb Heavy Duty Flooring	•	•	•	•
30mm One Piece XPS Insulated CNC Pre-Fabricated Roof	•	•	•	•
Aluminium Composite Panel : 5 Colour Options	•	•	•	•
Cruisemaster Single ATX 3.0T ATM Coil Suspension with 12" Elctric Brakes	NA	NA	NA	NA
Cruisemaster Tandem XT 3.7T ATM Coil Suspension with 12" Elctric Brakes	•	•	•	•
DO35 / DO45 V2 HitchMaster Coupling (Subject to Weights)	•	•	•	•

Specifications

Model	19ft11 EW (CD)	21ft6 (CD)	22ft6 (CD)	22ft10 (CD)
Exterior				
265/75 R17 All Terrain Tyres on Silver/Black Rims Includes One Spare Wheel	•	•	•	•
Black Checker Plate , approx 750mm on sides	•	•	•	•
Printed Decals Choice of 5 colours	•	•	•	•
Picnic Table	•	•	•	•
External TV Box	•	•	•	•
External Awning with Mid roller support	•	•	•	•
Electric Awning	o	o	o	o
Double Manual Entry Step	•	•	•	•
Entry Door Grab Handle with Light	•	•	•	•
Galvanized Bumper Bar 3 ARM 45 DEG 46" STD	•	•	•	•
Alko 8" Jockey Wheel	•	•	•	•
Full Width Tunnel Boot	•	•	•	•
Checker Plate Toolbox with Double Sliders and Opening Top Lid	•	•	•	•
Milenco Dust Reduction Antenna	•	•	•	•
Jerry Cans x 2	•	•	•	•
Fusion Panel Speaker Outdoor plus Mounting Bracket, with SRX400 Marine Stereo	•	•	•	•
Safety Dave RVDash Kit (6" Dash + Mini Square Camera 92 Degree AHD Black)	•	•	•	•
Electrical				
Projecta / Intelli Grid - Compact 100 Consisting of :	•	•	•	•
3000W / 180 Amp Inverter/AC Charger	•	•	•	•
40Amp DC_DC Charger	•	•	•	•
40Amp Solar Charger x 2	•	•	•	•
7 Inch Colour Screem	•	•	•	•
3 Water Tank Monitoring Sensors	•	•	•	•
400AH Projecta HD Lithium Battery Internal 500A Shunt (installed internally)	•	•	•	•
Three Solar Panels - Four Solar Panels (200watts each/ model dependant)	•	•	•	•
Anderson Plug - DCtoDC Battery Charging	•	•	•	•
Additional Anderson Plug - Portable Solar Panel	•	•	•	•
Dexter Anti Sway System (DSC)	•	•	•	•
Milenco Dust Reduction Antenna	•	•	•	•
Starlink Ready: 12V Starlink Cosmo (for Starlink Gen 3)	•	•	•	•
Fusion Radio Apollo 770 Stereo System Plus Fusion Corner Speakers (2 Bedroom and 2 Seating Area)	•	•	•	•
Dimmerable Downlights with soft LED strip light in Ensuite.	•	•	•	•
Soft LED strip Lights at : Main Bed Side Tables, Under the Kitchen OHC and Ensuite Cabinetry (Under OHC and KickBoard)	•	•	•	•

Model	19ft11 EW (CD)	21ft6 (CD)	22ft6 (CD)	22ft10 (CD)
Electrical				
Multi Colour Annex Light - Door Side	x3	x3	x3	x3
Multi Colour Annex Light - Driver Side	x1	x1	x1	x1
External Power Point at Picnic Table	•	•	•	•
Reversing Camera	•	•	•	•
Wireles Reversing Camera	o	o	o	o
27" Smart TV (Van size > 19ft2)	•	•	•	•
Tunnel Boot lighting at lockable doors , both sides	•	•	•	•
240V Single Power point,12V Socket,USB port in Bedside Nook	•	•	•	•
Double Power Points : Living Seating Plus USB, Kitchen and Ensuite	•	•	•	•
Reading Lights : Bedroom x2 , Living x 2	•	•	•	•
External TV Box : 240V Single Power Point, CIG 12V / Antenna Point Plus Fusion SRX400 Stero and External Panel Speaker	•	•	•	•
Built in Phone Chargers	•	•	•	•
Plumbing				
Multi Lockable Water Filler Box with Fresh Water Tank Change Over Valve	•	•	•	•
Three Water Tank Sensors	•	•	•	•
External Mounted SailingFlo Pump Under chassis	•	•	•	•
Fresh Water Tanks : 2 x95 Litres	•	•	•	•
Grey Water Tank : 1 x 110 litres	•	•	•	•
External Shower	•	•	•	•
Mains Tap to A Frame & Mains Pressure	•	•	•	•
Two 9kg Gas Bottles Stored Internally within the Toolbox	•	•	•	•
External Gas Bayonet Fitting	•	•	•	•
Gas and Electric Hot Water System	•	•	•	•
Global Eberspacher Diesel Heater (2.2KW)	•	•	•	•
Non Return Valve on the Shower, Vanity Bowl and Kitchen Sink	•	•	•	•
Protection over PVC Drainage Pipes	•	•	•	•
Thetford C263CS Ceramic Toilet	NA	NA	NA	•
Thetford C402-C Left / Right Hand Toilet	•	•	•	NA

Specifications

Model	19ft11 EW (CD)	21ft6 (CD)	22ft6 (CD)	22ft10 (CD)
Ensuite / Bathroom				
Separate Shower & Toilet	•	•	•	•
Fully Moulded One Piece Large Shower Cubicle	•	•	•	•
Sliding or Hinged Door at Ensuite Entrance (Model Dependent)	•	•	•	•
Caramic Swivel Toilet (Model dependent)	•	•	•	•
Mixer taps Basin , Shower	•	•	•	•
Single Internal Towel Rail	•	•	•	•
Exhaust Fan Hatch in Shower	•	•	•	•
Bathroom Window Above Toilet	•	•	•	•
Qflow Exclusive 2.5kg Front Loader Washing Machine	•	•	•	•
Kitchen				
Recessed Thetford K1520 Combination Cooker -Dual Fuel W/Fan Forced Oven	•	•	•	•
White Aluminium Kitchen Splashback	•	•	•	•
Three way Filter Tap	•	•	•	•
Qflow 23Litre Microwave Oven	•	•	•	•
Dometic 216 Litre RUC Compressor 8408 X (van > 19ft9)	•	•	•	•
Slimline RangeHood	•	•	•	•
My Coolman 3.2KW Reverse Cycle Air Conditioner	•	•	•	•
Living Seating Area				
Padding Over Entry Door and Roof Mounted LED	•	•	•	•
Exclusive Designed Seating with side Leg Support	•	•	•	•
Heavy Duty Vinyl Flooring available in 4 colours	•	•	•	•
Exclusive designed Map/ Magazine and Key holder	•	•	•	•
Tic Cushion supplied with Telescopic table base	•	•	•	•
Bedroom				
Exclusive Designed Full Size Bedhead	•	•	•	•
Pillow Top Spring Mattress on Slatted Bed Base	•	•	•	•
Roof Hatch with Lights	•	•	•	•
Wardrobe with Bedside Nook and Bottom Drawers	•	•	•	•
Side Tables with Soft LED lighting	•	•	•	•
Built In Phone Charger	•	•	•	•

Model	19ft11 EW (CD)	21ft6 (CD)	22ft6 (CD)	22ft10 (CD)
Bunk Beds				
Double or Triple Bunks	•	•	•	•
Bed Length	1850mm	1850mm	1850mm	2285mm
Padded Side Support and Ladder	•	•	•	•
240V Single Power point,USB port in Bedside Nook	•	•	•	•
Reading Lights per Bunk	•	•	•	•
Cabinetry				
CNC Cabinetry through out the Entire Van	•	•	•	•
Modern Slimline Benchtop (Kitchen and Ensuite)	•	•	•	•
White Aluminium Kitchen Splashback	•	•	•	•
Gas Door Struts on Overhead Cupdoors	•	•	•	•
Cultrey Drawer Insert	•	•	•	•
Safety				
Breakaway Safety System	•	•	•	•
Fire Extinguisher	•	•	•	•
Smoke Alarm	•	•	•	•
Gas Detector	•	•	•	•
Door - External 4 Pin lock with Security Screen	•	•	•	•
Dexter Anti Sway Control System (DSC)	•	•	•	•
Accessories				
Exclusive Millard BackPack	•	•	•	•
Exclusive Millard Umbrella	•	•	•	•
Exlcusive Millard Pen set	•	•	•	•
Exclusive Key Ring	•	•	•	•
Exclusive Millard BaseBall Cap	•	•	•	•



Your ticket to *freedom*
since 1947

Unit 1/36-42 Orange Grove Road,
Warwick Farm NSW 2170

02 9829 2055

info@millardrv.com.au

millardcaravans.com.au

[@millardcaravans](#) [f](#) [@](#) [in](#) [v](#) [d](#)

Trusted name for 78 years

Your Millard Caravans Dealer:

